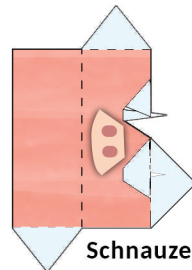
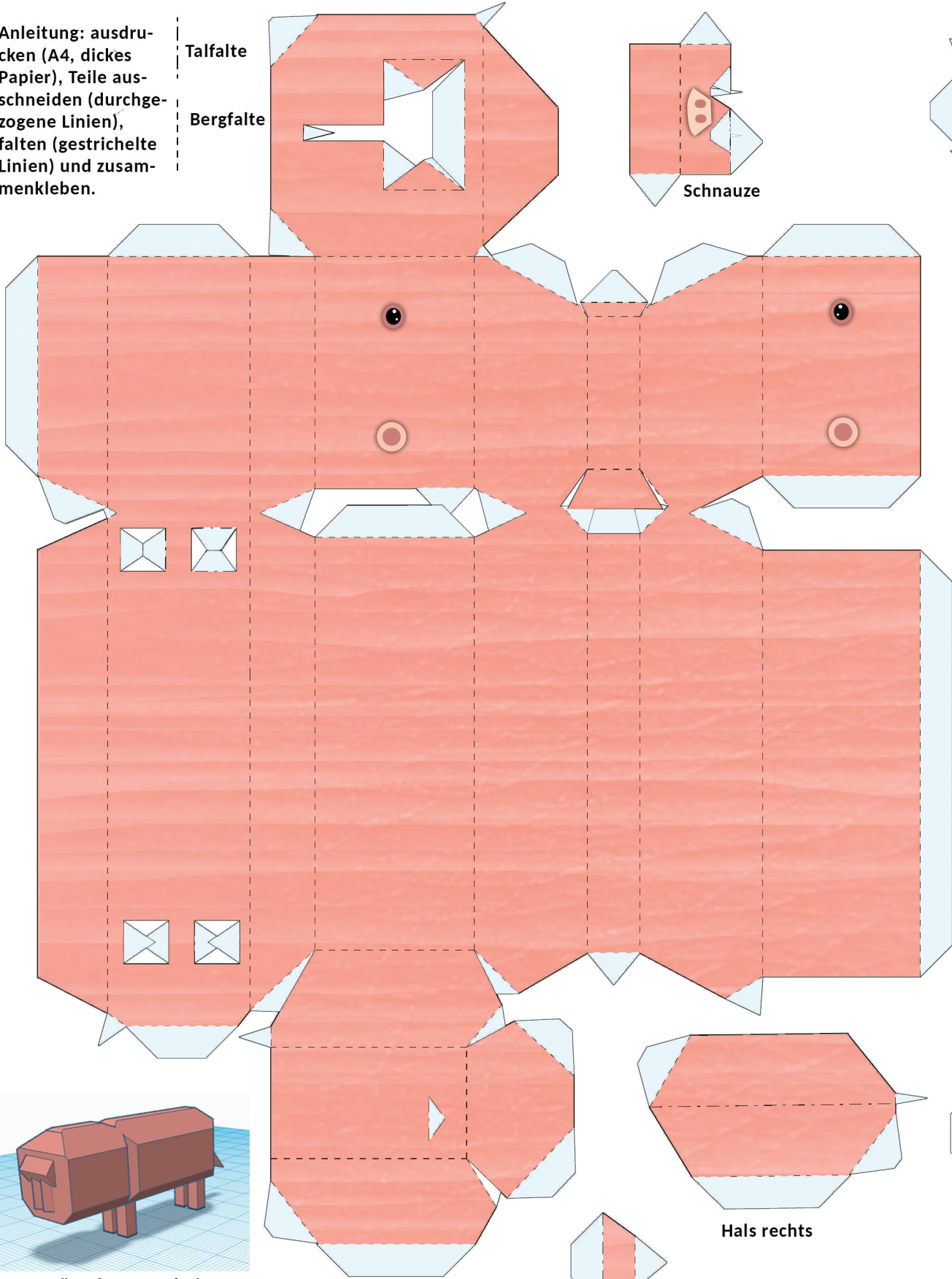
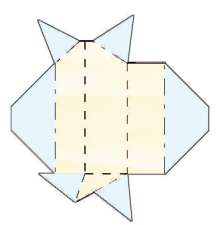


Anleitung: ausdrucken (A4, dickes Papier), Teile ausschneiden (durchgezogene Linien), falten (gestrichelte Linien) und zusammenkleben.

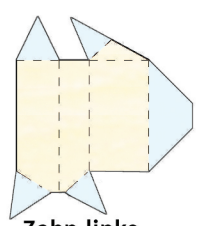
Talfalte
Bergfalte



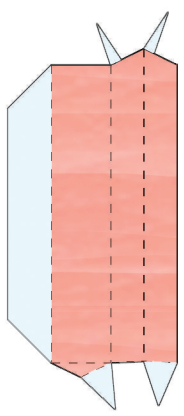
Schnauze



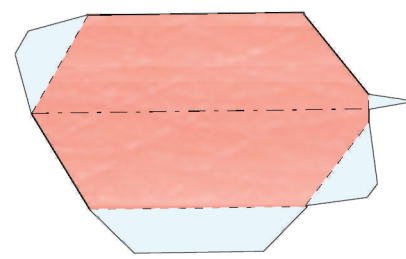
Zahn rechts



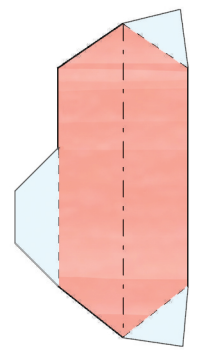
Zahn links



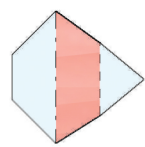
Schwanz



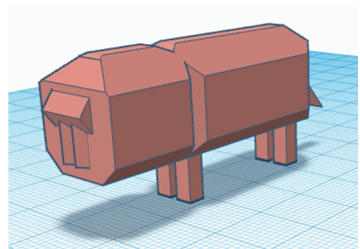
Hals rechts



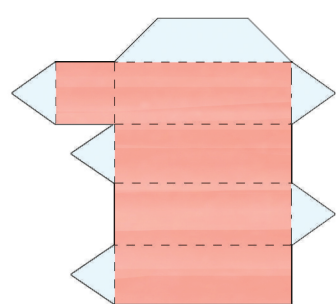
Hals links



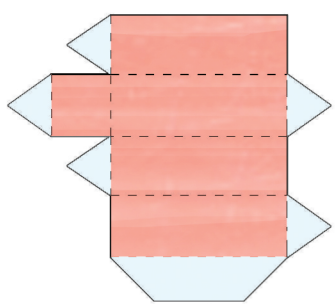
Hals oben



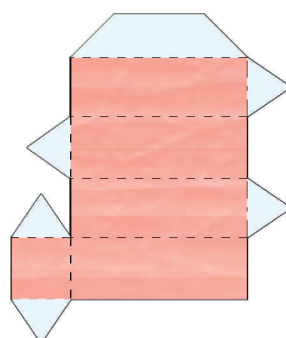
gewünschtes Ergebnis



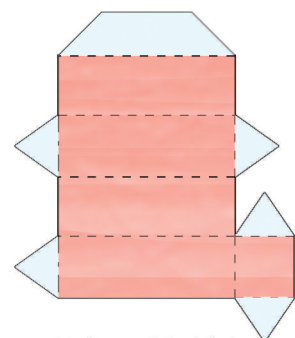
Bein links hinten



Bein rechts vorne



Bein links vorne



Bein rechts hinten